

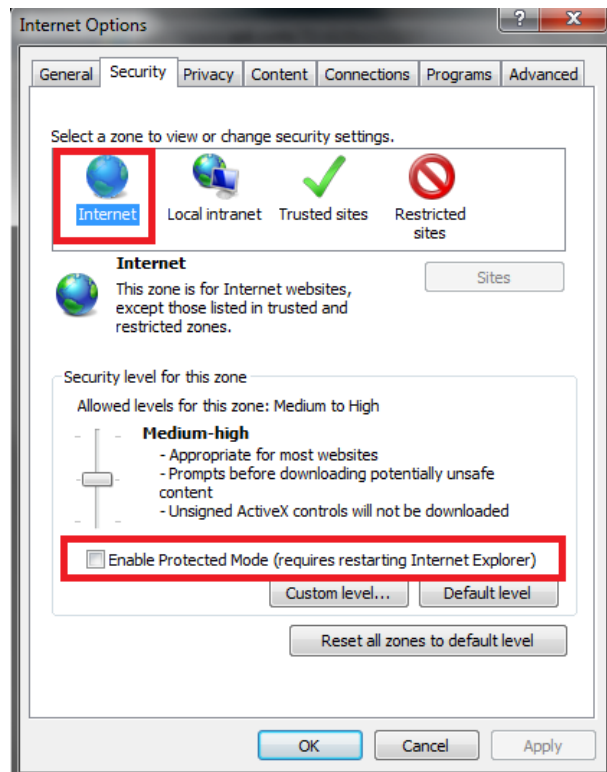
Fixing ClaimMaster Issues Related To Internet Explorer Settings

ClaimMaster automates the use of Windows Internet Explorer (“IE”) to access certain sections of the USPTO and EPO websites, such as to navigate through PAIR or to access EPO’s bibliography/image sections. However, recent versions of Internet Explorer have introduced a number of features that require further configuration to enable ClaimMaster to use IE automation. In particular, you may need to (1) disable “Protected Mode” in Internet Explorer and (2) enable “Compatibility View” for the USPTO and EPO’s websites. The instructions to so are provided below.

I. Disabling Protected Mode In the Internet Explorer

In some cases, to fully permit ClaimMaster to use the Windows Internet Explorer to access certain sections of the USPTO and EPO websites, you will need to disable “Protected Mode” in the Internet Explorer versions 8 and higher. To disable “Protected Mode” in Internet Explorer, go to “**Internet Options->Security**” and make sure that “**Enable Protected Mode**” checkbox for the “Internet” tab **is not checked**, as shown in the screenshot on the right.

Note: If you do not feel comfortable disabling “Protected Mode” for all of “Internet,” you can go to the “Trusted Sites” section and add “uspto.gov” and “espacenet.com” to the list of trusted sites (also make sure “Protected Mode” is disabled for “Trusted Sites”). However, in our experience, enabling “Protected Mode” in the “Internet” section appears to override any Trusted Sites settings in some versions of Internet Explorer, so you may want to experiment with these settings.



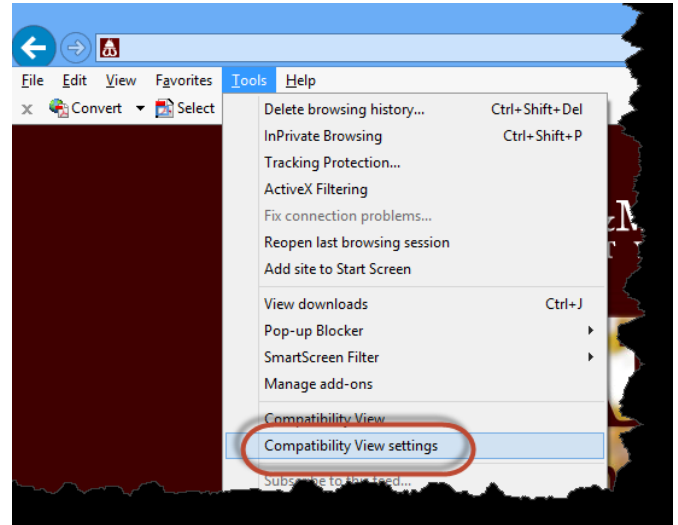
II. Internet Explorer Ver. 10 or greater: Enabling Compatibility View

If you have installed Windows Internet Explorer version 10 or greater, some ClaimMaster features, such as IDS generation, will not work correctly. Placing the browser into "Compatibility View" corrects these issues.

In order to always use compatibility view, go through these following steps:

Step 1: Open Internet Explorer in Desktop View (Not Tiled View). Open any page, such as <http://www.uspto.gov>

Step 2: Press the "Alt" key on your computer's keyboard. The "Alt" key is located on either side of your space bar. A toolbar should appear toward the top of your screen with several menus, "File Edit View Favorites Tools Help". Review the image below and select "Tools". From this menu, select "Compatibility View Settings."



Step 3: type in the following and click "Add":

- uspto.gov
- espacenet.com

Step 4: Make sure both of the above websites show up in the "Websites you've added to Compatibility View:" box.

Step 5: Click "Close".

